

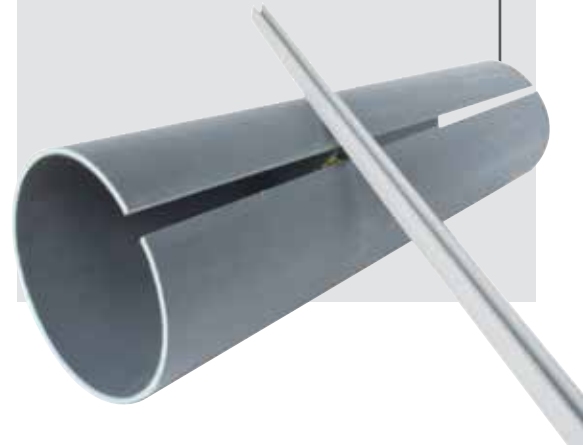
SUPER DUCT® CSA Type II - Split Duct

Super Duct® is specifically engineered and manufactured to deliver the high-impact and crush strength demanded by today's utility companies, for underground ducting applications.

The **SPLIT DUCT** is an innovative and efficient product that is great for enclosing fiber optics, cables, and repairing damaged conduit. Made from Super Duct pipe, the **SPLIT DUCT** conduit is cut at the plant to guarantee a straight cut. The H section/zipper is extruded and cut to proper length and is then used to seal the pipe after repair.

Features and Benefits:

- Cost savings with fast and easy installation
- The smooth bore facilitates cable pulling and eliminates costly cable damage
- Ideal for the repair of Duct pipe in electrical, telecommunication, utility and CATV applications
- Locking system (H section/zipper) is specially designed to provide a secure seal



CSA Type II – Split Duct (inches)

Size	Product Code	Ft/ Crate	Weight/ 100' (lbs)
2	008222	2,460	33.7
3	008232	1,120	61.2
3-1/2	008237	810	77.3
4	008000	630	99.2
5	008252	430	159.6

Installation

1. Remove the H section.
2. Insert wires/cables through opening of split duct.
3. Put back H section and make sure that its properly sealed before concrete pour.

NOTE: Not to be used in direct burial applications

Super Duct Dimensions

Size		Minimum ID		Nominal Wall		Average OD	
in	mm	in	mm	in	mm	in	mm
2	50	2.001	50.83	.082	2.08	2.250	57.15
3	75	3.000	76.20	.097	2.46	3.250	82.55
3-1/2	90	3.480	88.39	.109	2.77	3.730	94.74
4	100	3.941	100.10	.120	3.05	4.216	107.09
5	125	4.974	126.34	.153	3.89	5.299	134.60

Contact us

Visit our website: ipexna.com

Toll free Canada: (866) 473-9462

Products manufactured by IPEX Electrical Inc.
Super Duct® is a trademark of IPEX Branding Inc.